



DigiFed

AI & Software Bootcamp

7th May, 2020

Digital Catapult, Ikerlan, University of Ljubljana



This project has received funding from the European Union's Horizon 2020 research and innovation programme under grant agreement No 864266.

Welcome



Welcome



The screenshot shows the BLUMORPHO virtual meeting interface. At the top, there is a navigation bar with the BLUMORPHO logo, the text "Bootcamps DIGIFED", and a user icon. On the right side of the top bar, there is a green box containing icons for mute, unmute, and a menu. Below this, the text "Présentateur" is visible. The main area of the interface is a virtual room with a light blue background and a geometric pattern. In the center, there is a dark blue box with the text "Partager un contenu ou projeter des webcams". On the left and right sides, there are smaller boxes labeled "Table 4" and "Table 5" respectively. At the bottom, there is a control bar with several icons: a minus sign, a plus sign, a screen icon, and a full screen icon. To the right of these icons are the labels "Webcams 1", "Participants", and "Live Chat".

At this table, you can't speak, and it is normal.

To zoom in and out

To display the presentation full screen

To chat with us

Agenda

- **Introduction, objectives and agenda (10 minutes)**
- **How to use AI & Software capabilities as part of your project while leveraging DigiFed Partners to maximise your proposal scores: Excellence, Impact, Implementation Quality (45 minutes)**
 - Digital Catapult
 - University of Ljubljana
 - Ikerlan
- **Open floor discussion with Q&A**



Digital Catapult

Nathan Coulson | AI&ML Technologist

AI/ML at the Digital Catapult



**Accelerating AI
startups**



**MACHINE
INTELLIGENCE
GARAGE**

**Increasing AI
adoption in Industry**

SIEMENS

**Leading on
applied AI Ethics**



AI Compute, Machine Learning & AI Ethics Capability

- **Function:** We are able to offer a specialised acceleration programme, that addresses the challenges that today's artificial intelligence (AI) and machine learning (ML) startups face.
- **Principle:**
 - Time and support on internal infrastructure (access to two DGX-1 servers)
 - Ethics Support
 - Combined AI/IoT Technical support
 - Access to cloud credits/vouchers
- **Uniqueness:**
 - We have already supported over 80 startups across multiple industries (raising £25m in equity investment over 2 years)
 - Access to resources provided by Google, Nvidia, AWS, EPCC, Graphcore and more
 - Industry leading AI Ethics expertise through our Ethics Steering and Advisory boards

- **Maturity/TRL:**

- Technology Readiness Level

- **Applications:**

- Support early stage AI startups to bring new products to market in an ethical and efficient way
 - Access to compute for resource constrained startups/smaller SMEs
 - AI ethics advice for startups, smaller and larger SMEs



Technology partners and collaborators



Examples of tailored support for AI startups

Tailored MI Garage support activities

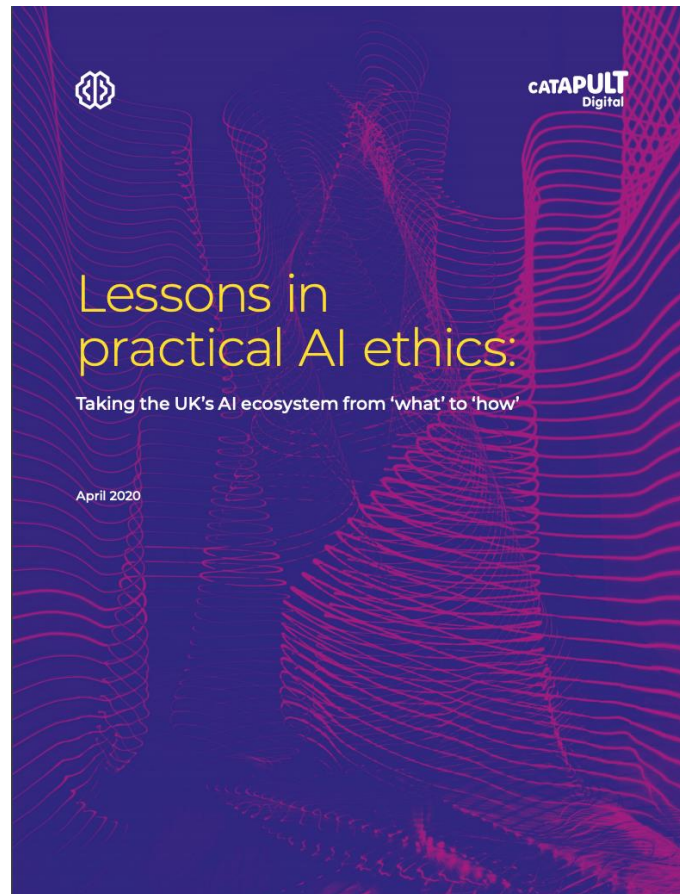
- Technical Office hours with the AI/ML team to design a support plan
- Supported onboarded to compute infrastructure (cloud or on-premise)
- AI Ethics consultation with members of our expert AI Ethics advisory board to discuss and mitigate potential ethical issues



Technical, business and ethics workshops

- Design tools for AI: Human Centred Design for AI startups
- AI & IoT Workshop: Deploying AI at the edge
- AI Platforms and Architecture workshop: Building for scale

Recent publications



<https://bit.ly/2W1WI3K>



<https://bit.ly/2SwtMOQ>



University of Ljubljana

Dr. Andrej Duh

percipio<BigData>

data-science company (team combining young & experienced researchers & entrepreneurs) based in Vienna and Maribor

officially listed as WKNÖ (Austrian Chamber of Commerce)
technology & innovation partner (TIP)

started in 2013 as a spin-off company of University of Maribor

today we find information using internet
search

$$\text{search results} = \text{keyword query} + \text{context}$$

do you know your keywords?

“The limits of my language mean the limits of my world.”

(Tractatus Logico-Philosophicus 5.6., 1922)

L. Wittgenstein

percipio<BigData> value creation

1 data-driven insight & discovery

novelty search significantly outperforms objective-based search, suggesting the strange conclusion that some problems are best solved by methods that ignore the objective

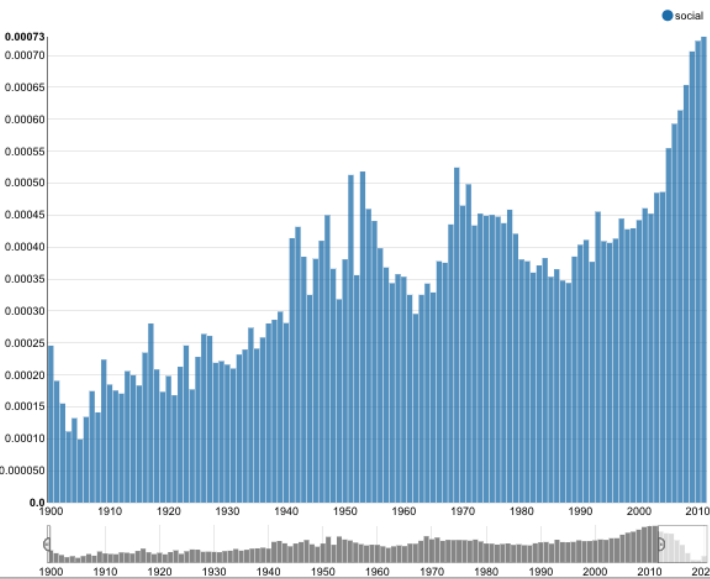
2 industry convergence

Industry convergence represents an unprecedented growth opportunity for an organization, but is also a threat since other companies can absorb the organization's core business to fulfill their own industry convergence objectives. The success of cross-industry value experiences depends on a thorough ecosystem strategy, selecting the right partners within it and executing an industry expansion strategy.

1 find, organize & connect keywords (starting with > 200 000 per user, updated and expanding regularly)

2 enable and support insight + discovery (matching & ranking with over 250 M indexed data in growing percipio database - scientific papers, patents, reports and projects)

3 generate new ideas by smart guidance through connected keyword-space



head does not follow the rule. This research study aims to explore what factors cause the riot and why it happens in the election of the village head. The result of the research shows that the social riot results the accumulation of disappointment due to the election result that does not...

Cultural Heritage and Social Environment Coherence in the Ethnographic Villages of Lithuania

Vilma Karvelytė – Balbierienė, Aušra Mlinkauskienė - 2014

The records of the State protected cultural heritage objects in the preserved ethnographic villages of Lithuania; the survey records on their assessment; the guidelines on their potential use are considered to comprise a very significant part in the field of culturologic assessment. It is closely related to the needs and demands of the currently developed agricultural produce in these villages and the prevailing public services...

The economic thought of "the shortage of village labors"

Wei Xin-qiang - 2005

The Shortage of Village Labors had been spread,because of village labors themselves,government and enterprises. The solution of this problem needs the effort of government ,enterprises ,village labors themselves and social media organization.

The dialectics of village and state in modern Thailand.

Jeremy Kemp - 1991

The traditional Thai village as an autonomous and corporate local community is a myth whose origins are located in nineteenth century Western social theory. The paper examines the dynamics of relations between local patterns of social organization and the state with particular reference to the ideology of community and the manner in which it is expressed and manipulated.

The Impact of the "Village" Model on Health, Well-Being, Service Access, and Social Engagement of Older Adults

Carrie L. Graham, Andrew E. Scharlach, Jennifer Price Wolf - 2014

Background. Villages represent an emerging consumer-driven social support model that aims to enhance the social engagement, independence, and well-being of community-dwelling seniors through a combination of social activities, volunteer opportunities, service referral, and direct assistance. This study aimed to assess the perceived impact of Village membership on factors associated with the likelihood of aging in place...

The Role of Social Capital in Social Development——Tentatively on the practice of increasing social capital in the South K...

Zheng Chuan-gui - 2006

At present,social capital has been regarded as the key to world economy.It is widely used to explain the differences of economic development and project performance existing among countries or regions with same or similar physical and human capitals.Nevertheless,its role in social development is rising.The roles can be played through the four aspects: overcoming predicament of group action,improving efficiency of public...

Regionalism, mobility, and "the village" as a set of social relations: Himalayan reflections on a South Asian theme

Sara Shneiderman - 2015

This article considers how ethnographic representations of "the village" have created links between otherwise disparate "regional ethnography traditions" over time. "The village" has served as a multivalent sign that at once works to integrate specific locales into broader scholarly narratives, and to index moments of disjuncture in the production of regionality. I make this argument with specific reference to the relationship...

Economic approach to village community and institutions.

Y. Hayami, M. Kikuchi - 1980

The Romanian village: a form of human community.

C. Gavrilă - 2011

Village-based development in Niugini: the Matangan Association.

H. J. Schutte - 1973

SOCIAL INTERACTION AND SOCIAL STRUCTURE IN A GREEK ISLAND VILLAGE

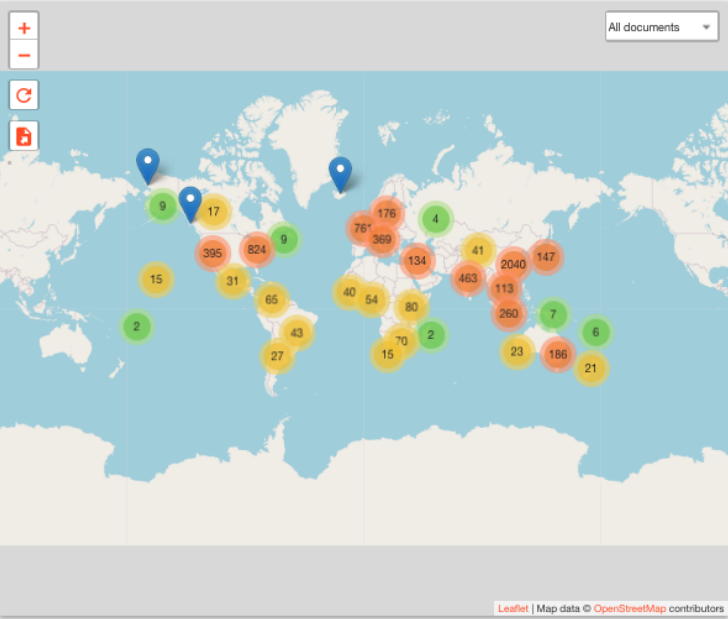
Richard Currier - 1976

Can We Treat Thematic Villages As Social Innovations

Anna Kloczko-Gajewska - 2014

The term "social innovation" gained popularity within scholars, however its definitions differ to a large extent; the most promising one says about a change in attitudes and behaviour of a group of people that in relation to the group's horizon leads to new and improved ways of collaborative action. This paper tries to answer the question whether thematic villages, where the inhabitants jointly decide on a topic and prepare unique...

Total 3208782 results



The Impact of the "Village" Model on Health, Well-Being, Service Access, and Social Engagement of Older Adults

Carrie L. Graham, 1University of California Berkeley School of Social Welfare, Berkeley, CA, USA
Andrew E. Scharlach, 1University of California Berkeley School of Social Welfare, Berkeley, CA, USA
Jennifer Price Wolf, 2Pacific Institute for Research and Evaluation, Oakland, CA, USA

Health Education & Behavior, 2014, 4141, 1

DOI: 10.1177/1090198114532290

Background. Villages represent an emerging consumer-driven social support model that aims to enhance the social engagement, independence, and well-being of community-dwelling seniors through a combination of social activities, volunteer opportunities, service referral, and direct assistance. This study aimed to assess the perceived impact of Village membership on factors associated with the likelihood of aging in place. Additionally, the research examines the characteristics and service use of members who benefit the most. Method. Perceived impacts of Village membership in the areas of social engagement, service access, health and well-being, and self-efficacy for maintaining independence were assessed through a survey of 282 active Village members from five sites in California. Bivariate and multivariate analyses examined associations between member characteristics, volunteerism, service use, and self-reported impacts. Results. Villages have the strongest impact in the area of promoting social engagement and facilitating access to services. Three quarters of the participants report that the Village increases their ability to age in place. Positive impacts were associated with level of Village involvement, but less likely among members who had worse self-reported health. Conclusion. Villages represent a promising new model designed to support community-dwelling seniors with a number of positive impacts that may reduce social isolation, improve well-being, and increase confidence aging in place. Villages appear to have the greatest benefit for members who are most involved and fewer positive impacts for members in poor health, prompting questions about the long-term effectiveness of the Village model in helping more frail seniors to age in place.

Keywords:

social support, models, access to health care, regression statistics, surveys, health, aging individuals, multivariate analysis, aging in place, social isolation, village model, correlation, health services, older adults, self efficacy, social engagement, consumer driven, well being

FOS:

socioeconomics, correlation, social psychology, health, nursing, gerontology, social engagement, multivariate analysis

References:

1. Lynne C. Giles, Patricia Metcalfe, Gary Glonek, Mary A. Luszcz, Gary Andrews; The Effects of Social Networks on Disability in Older Australians, 2004, 1616, 4
2. Robert C. Kersting; Impact of Social Support, Diversity, and Poverty on Nursing Home Utilization in a Nationally Representative Sample of Older Americans, 2001, 3333, 2
3. Joong-Hwan Oh; Social Bonds and the Migration Intentions of Elderly Urban Residents: The Mediating Effect of Residential Satisfaction, 2007, 99, 3
4. Christina Lee, Jennifer R. Powers; Number of social roles, health, and well-being in three generations of Australian women, 2002, 99, 3

1 custom projects

collecting and post processing IOT data

data modelling and predictions

2 technologies

linear scalable NOSQL DB (Cassandra), fast in-memory processing (Spark), near real time processing (Storm), custom and elastic indexing, deep learning and AI with tensor flow, chat bots



Ikerlan

Ruano Jesus Miguel

IKERLAN **KONEKT**

YOUR 360° SOLUTIONS FOR INDUSTRIAL DIGITIZATION

IKERLAN.
WHERE TECHNOLOGY
IS AN ATTITUDE

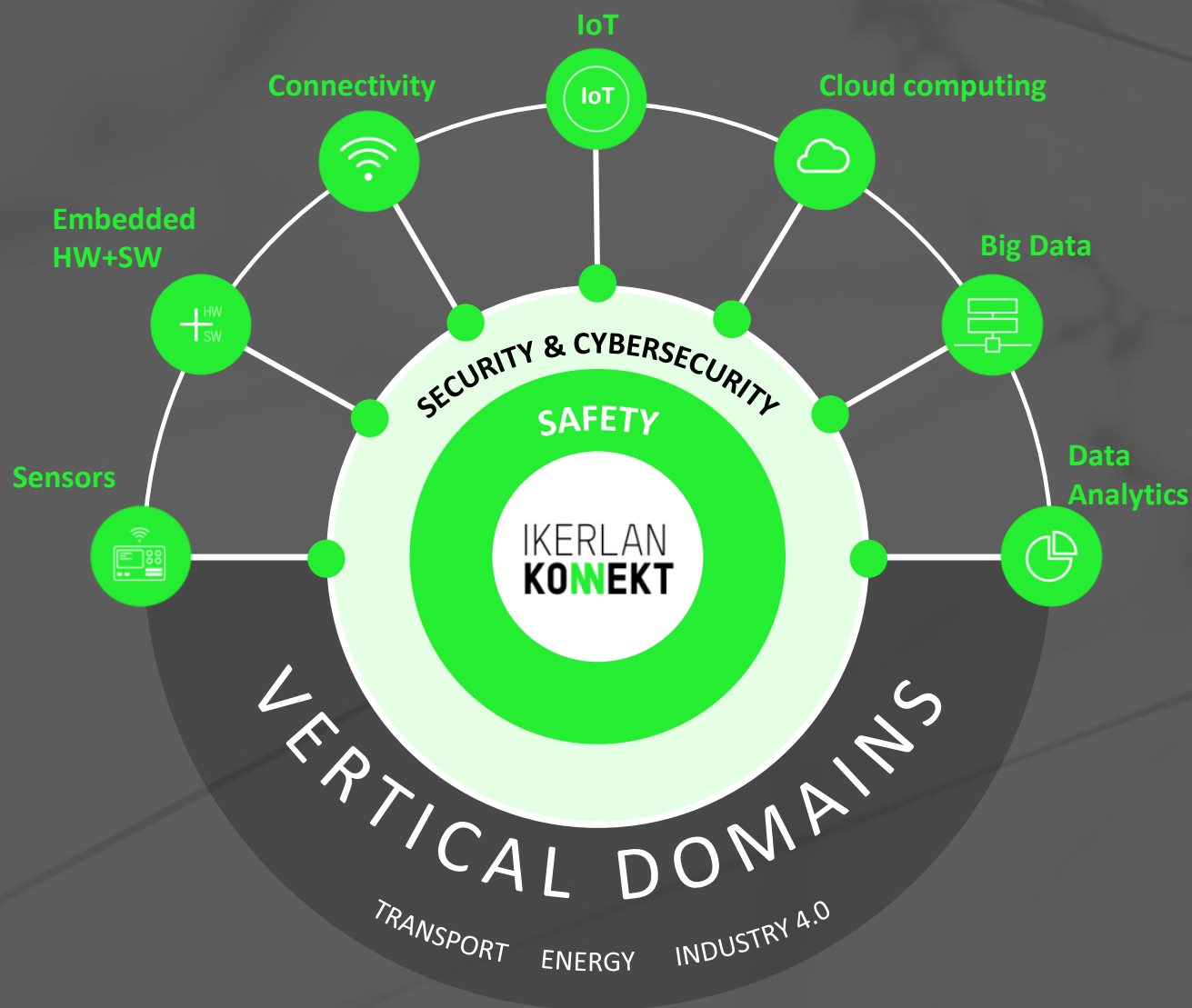
WHAT IS IKERLAN KONNEKT?

IKERLAN KONNEKT is a family of digitalisation solutions that adapts to the specific needs of each company. It covers all the necessary elements to be able to offer you a Digital Platform, integrating elements of own development and third-party applications that adapt to your business strategy of digitalisation.



IKERLAN KONNEKT solutions have already been successfully implemented in a dozen of industrial applications in sectors as demanding as equipment, transportation or energy.



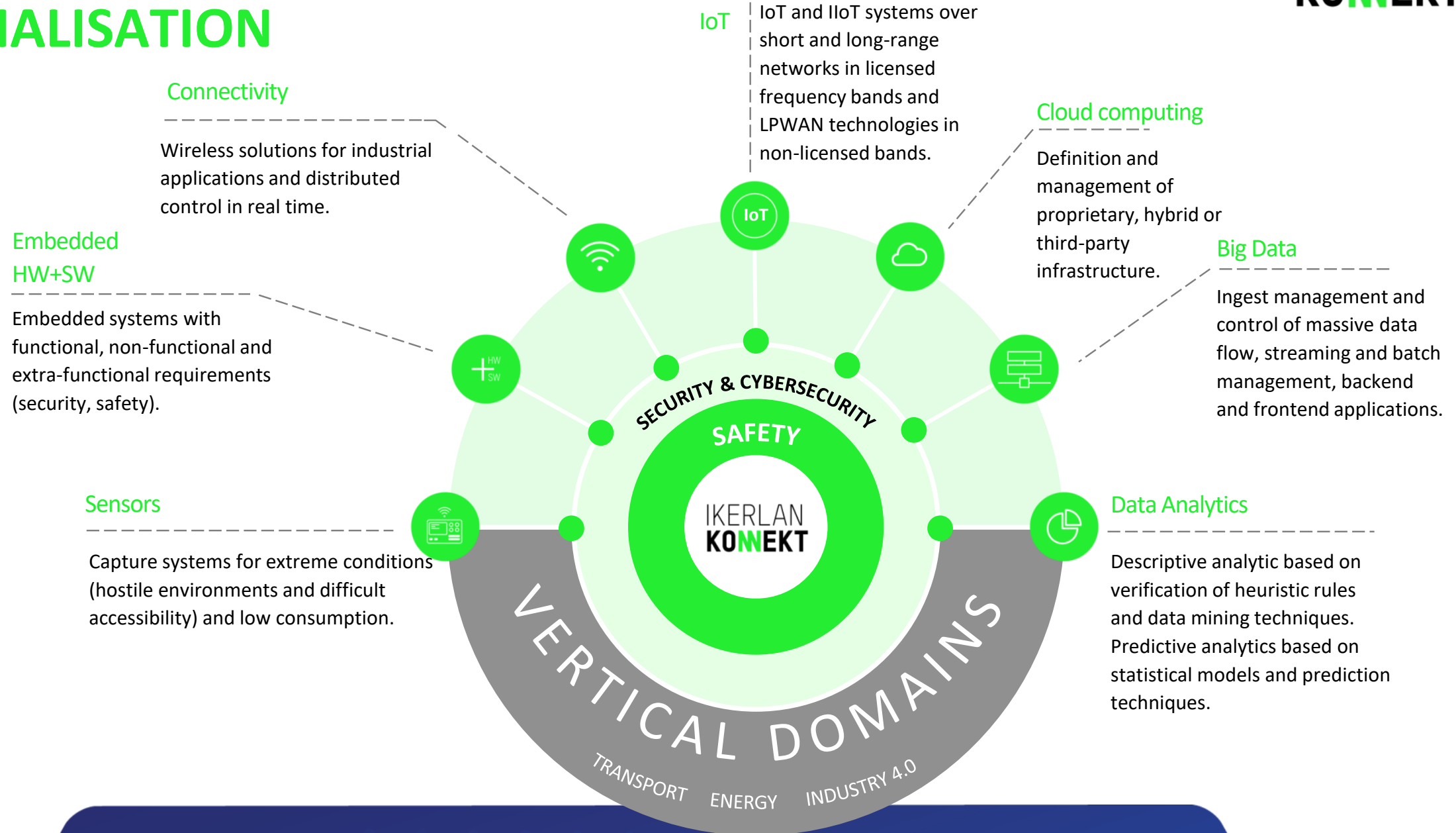


A FOCUS ON DIGITAL PERSONALISATION

Industrial digitalisation requires a whole chain of technologies that allow you to capture, send and process the information of your products / services (from the sensor to the cloud) in a totally secure way, so that only you can access, modify and extract value from your data.

Your business is different from others and you have individual needs. This is why you need a different and adapted technological solution. Only a specialist in EICT technologies (Electronics, Information and Communication) as IKERLAN can offer you the solution you need, thanks to its more than 150 specialized engineers.

TECHNOLOGICAL SPECIALISATION



IKERLAN KONNEKT: THE SOLUTION THAT ADAPTS TO YOU.

–
Your company needs a specific digitalisation process, exclusive for it, that respects its particularities and its ability to address the transformation. That's why, based on IKERLAN KONNEKT, we developed for you an absolutely optimal solution thanks to:



ADVANTAGES OF IKERLAN KONNEKT

INTEROPERABILITY

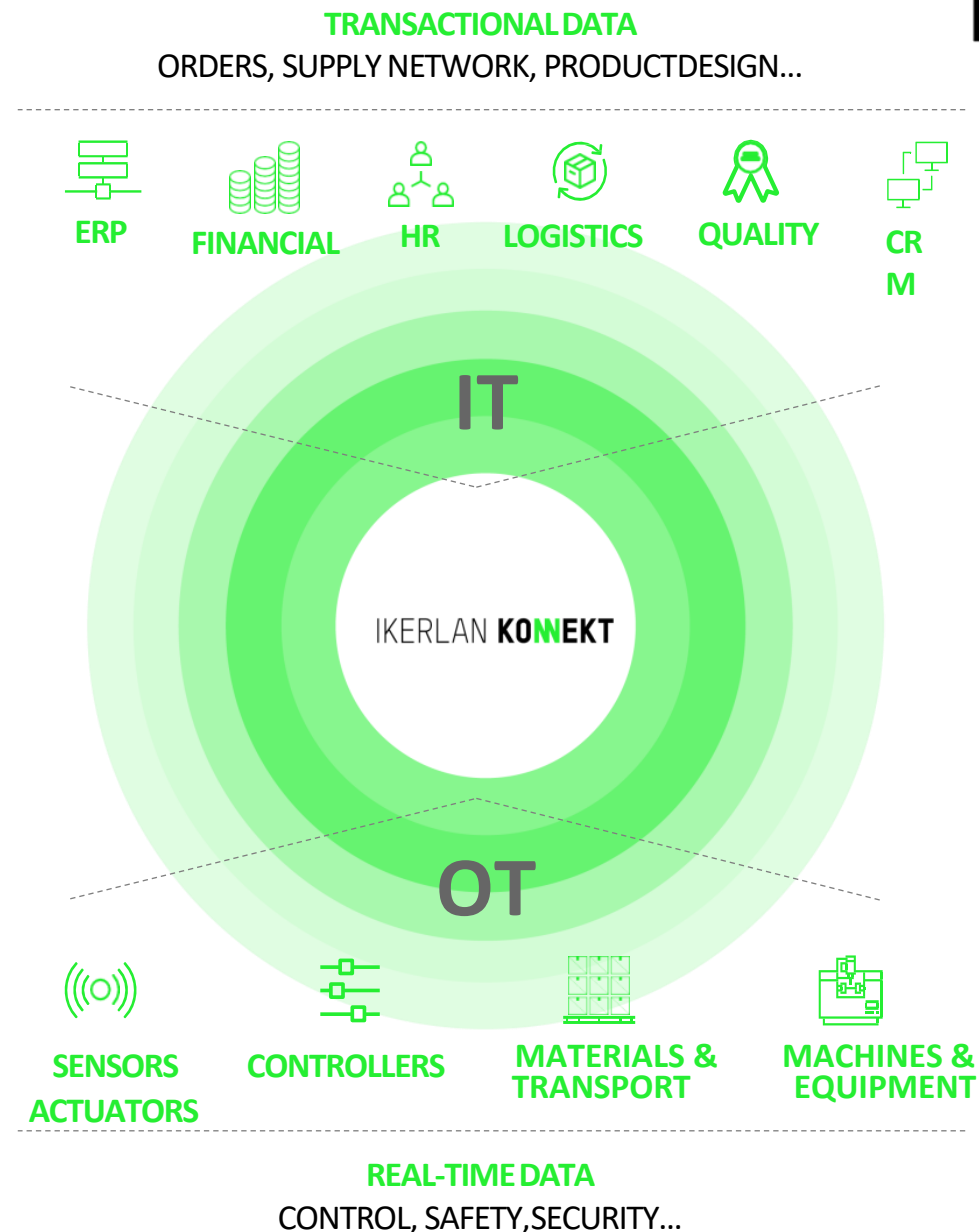
Designed for your product to be related to other products and integrated into the processes and digital platforms of your clients, guaranteeing interoperability and scalability.

SCALABILITY

Designed to respond to fleets or parks of growing connected equipment, maintaining the quality and the capacity of management and storage of the data derived from them.

OT/IT CONVERGENCE

Able to optimally integrate IT technologies, oriented to data computing, with OT technologies, oriented to the monitoring and control of industrial processes and equipment.



Industrial experiences

ALSTOM

ENERGY SECTOR

Digital platform in the cloud for multiparking from SCADA info.

Real-time big data volume consumption.

Real-time turbine damage prediction algorithm.

Real-time calculation of operation and maintenance indicators (OEE).



Industrial experiences

FAGOR ARRASATE

INDUSTRIAL EQUIPMENT SECTOR

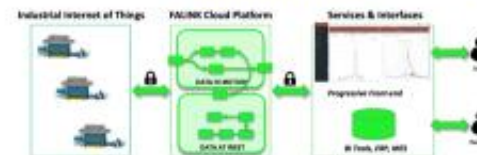
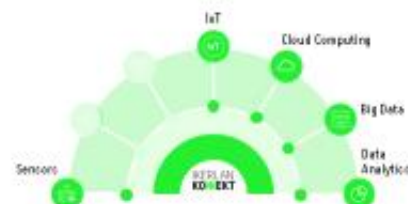
IoT digital platform for industrial services.

Real-time data input from presses around the world.

Calculation of relevant indicators.

Algorithms for advanced press monitoring (hits curve, consumption curve, etc.).

Platform with multi-business technology base (automotive, steel, appliances...).



Industrial experiences

ORONA

ELEVATION / VERTICAL TRANSPORTATION SECTOR

Digital Platforms oriented to the exploitation of the conservation business.

Sensorization in critical elements (CBM: Condition Based Monitoring).

Structural monitoring.

Industry 4.0 oriented Cyber Physical Systems.

Cybersecure connectivity systems (IoT/IIoT).

Intellectual property and communications protection (security + cybersec).

Predictive maintenance.

Products and services integration in the cloud.

Fleet of 500,000 lifts worldwide (50,000 with teleservice).



Industrial experiences

ULMA

LOGISTICS SECTOR

Digital platform for fleets of automatic warehouses. Multi-business deployment, multi-warehouse.

Focus on advanced services (SAT and logistics.) Real-time processing up to 100,000 events/sec.



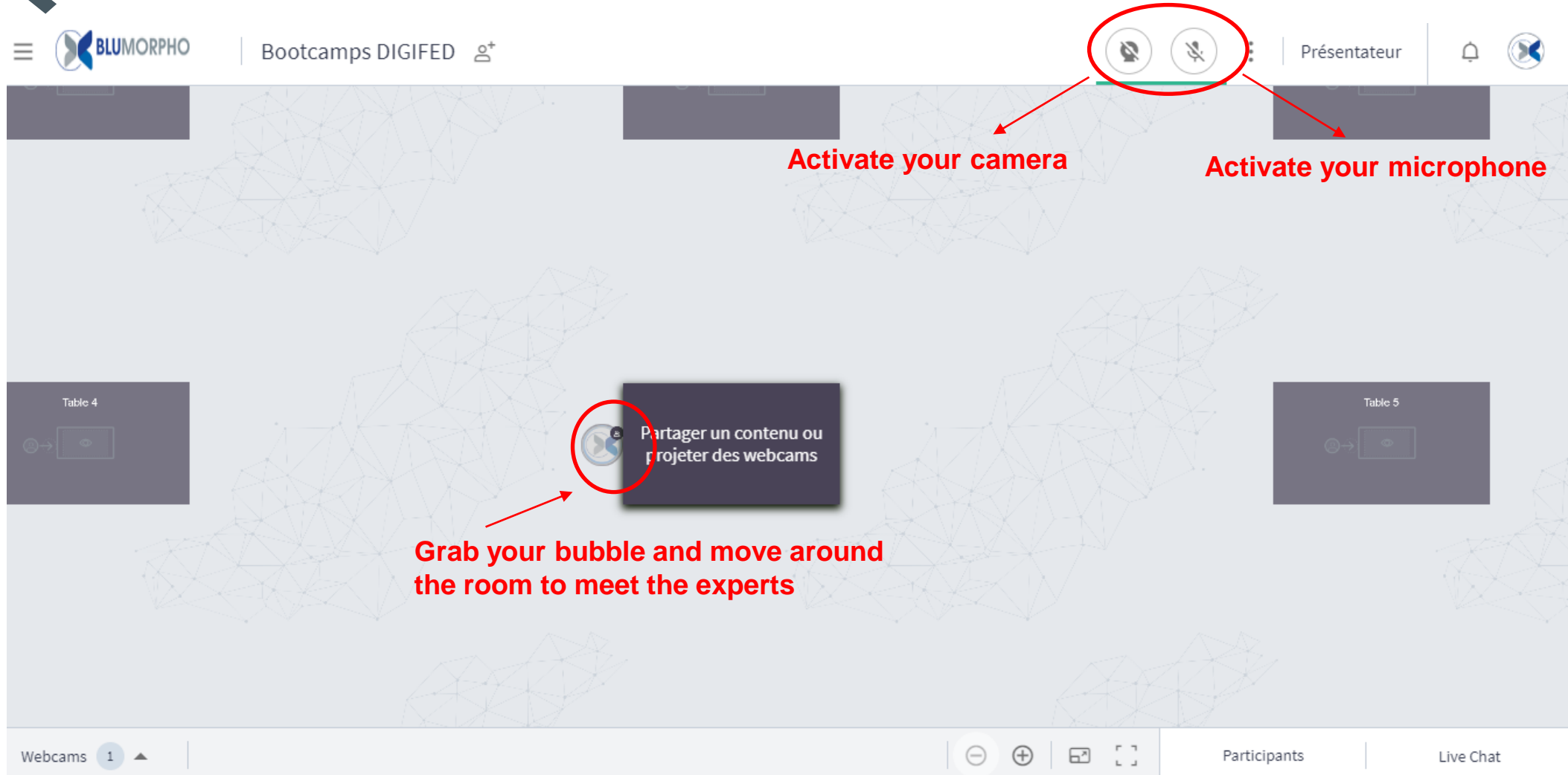
IKERLAN **KONNEKT**

YOUR 360° SOLUTIONS FOR INDUSTRIAL DIGITIZATION



Introduction to the Q&A session

Q&A session



Q&A session

